

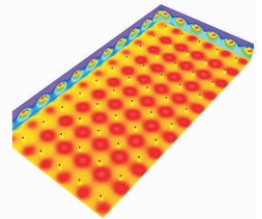
UFO LED HIGH BAY (125LM/W)



- UL, DLC, TUV, and CE Listed
- Philips3030+Mean Well LED driver, Light Efficacy \geq 125LM/W
- IP65 rating, with respirator, fog-proof
- Proprietary mold, thin, stylish
- Adopt strong heat conductivity AL1070(226W/mk)+AL6061 aluminum, thermal conductivity is double of that of die-casting ADC12 aluminum(96.2W/mk). Three-dimensional air convection cooling, make the product better heat dissipation and longer life
- Light source and LED driver isolated, in order to reach good ventilation, thus to prolong lifespan
- 80W/100W/120W/160W/200W/240W for options, Beam Angle: 60°/90°/120°, installation height:6-15m



Dissipation



Illuminance simulation diagram (Dialux)

Specifications

| Model No. | SN-UFO-80D | SN-UFO-100D | SN-UFO-120D | SN-UFO-160D | SN-UFO-200D | SN-UFO-240D |
|---------------|---|---|---|---|---|---|
| Power | 80W | 100W | 120W | 160W | 200W | 240W |
| Lumens | 60°/90°: \geq 10,000LM 120°: \geq 10,400LM | 60°/90°: \geq 12,500LM 120°: \geq 13,000LM | 60°/90°: \geq 15,000LM 120°: \geq 15,600LM | 60°/90°: \geq 20,000LM 120°: \geq 20,800LM | 60°/90°: \geq 25,000LM 120°: \geq 26,000LM | 60°/90°: \geq 30,000LM 120°: \geq 31,200LM |
| Efficacy | \geq 125LM/W | | \geq 130LM/W | | | |
| LED | Philip 3030 154PCS | | Philip 3030 245PCS | | Philip 3030 360PCS | |
| Driver | Mean Well | Mean Well | Mean Well | Mean Well | Mean Well | Mean Well |
| Voltage | 90-305VAC | 90-305VAC | 90-305VAC | 90-305VAC | 90-305VAC | 90-305VAC |
| PF | >0.95 | >0.95 | >0.95 | >0.95 | >0.95 | >0.95 |
| CCT | 2700K,3000K,3500K,4000K,5000K,5700K,6500K | | | | | |
| CRI | >80 | >80 | >80 | >80 | >80 | >80 |
| Material | AL1070+AL6061 | AL1070+AL6061 | AL1070+AL6061 | AL1070+AL6061 | AL1070+AL6061 | AL1070+AL6061 |
| Warranty | 5 years | 5 years | 5 years | 5 years | 5 years | 5 years |
| Beam Angle | 60°/90°/120° | 60°/90°/120° | 60°/90°/120° | 60°/90°/120° | 60°/90°/120° | 60°/90°/120° |
| Certificates | CE,UL,DLC,TUV | CE,UL,DLC,TUV | CE,UL,DLC,TUV | CE,UL,DLC,TUV | CE,UL,DLC,TUV | CE,UL,DLC,TUV |
| IP Rating | IP 65 | IP 65 | IP 65 | IP 65 | IP 65 | IP 65 |
| Storage Temp. | -40°-176°F | -40°-176°F | -40°-176°F | -40°-176°F | -40°-176°F | -40°-176°F |
| Working Temp. | -20°-140°F | -20°-140°F | -20°-140°F | -20°-140°F | -20°-140°F | -20°-140°F |
| Replaceable | 160W HID | 200W HID | 240W HID | 320W HID | 400W HID | 480W HID |
| N.W. | 2.42KGS | 2.42KGS | 3.35KGS | 3.35KGS | 5.15KGS | 5.15KGS |
| G.W. | 4.00KGS | 4.00KGS | 5.50KGS | 5.50KGS | 6.60KGS | 6.60KGS |